

# SUMP INVESTIGATION PROGRAM



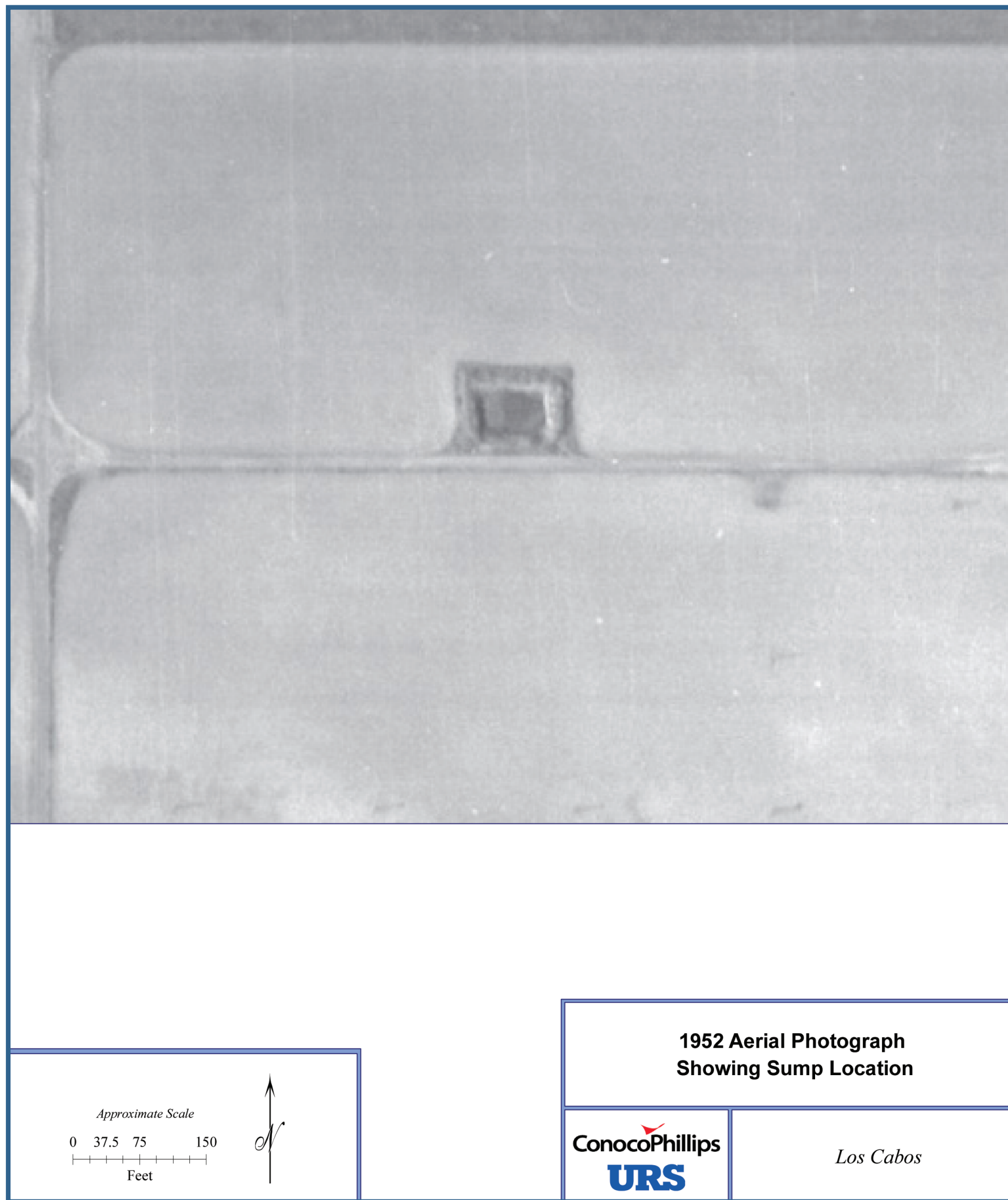
# EXAMPLE OF HOW A FORMER SUMP SITE IS INVESTIGATED

The Santa Maria Valley was an active oilfield prior to residential and commercial development. Records from that time did not always indicate whether or not a sump was removed when the well was abandoned before development proceeded. ConocoPhillips works with historic records and sophisticated testing to locate sump material that may still be in place.

The California Department of Oil, Gas and Geothermal Resources (DOGGR) maintains records of former oil well locations. ConocoPhillips' sump investigation program begins with a review of these DOGGR records. Historic aerial photos are reviewed by ConocoPhillips to locate the sump sites associated with these former oil wells. Then present day development maps are overlaid to pinpoint the properties that may have been built over former sumps. The area of the former sump is identified for investigation.

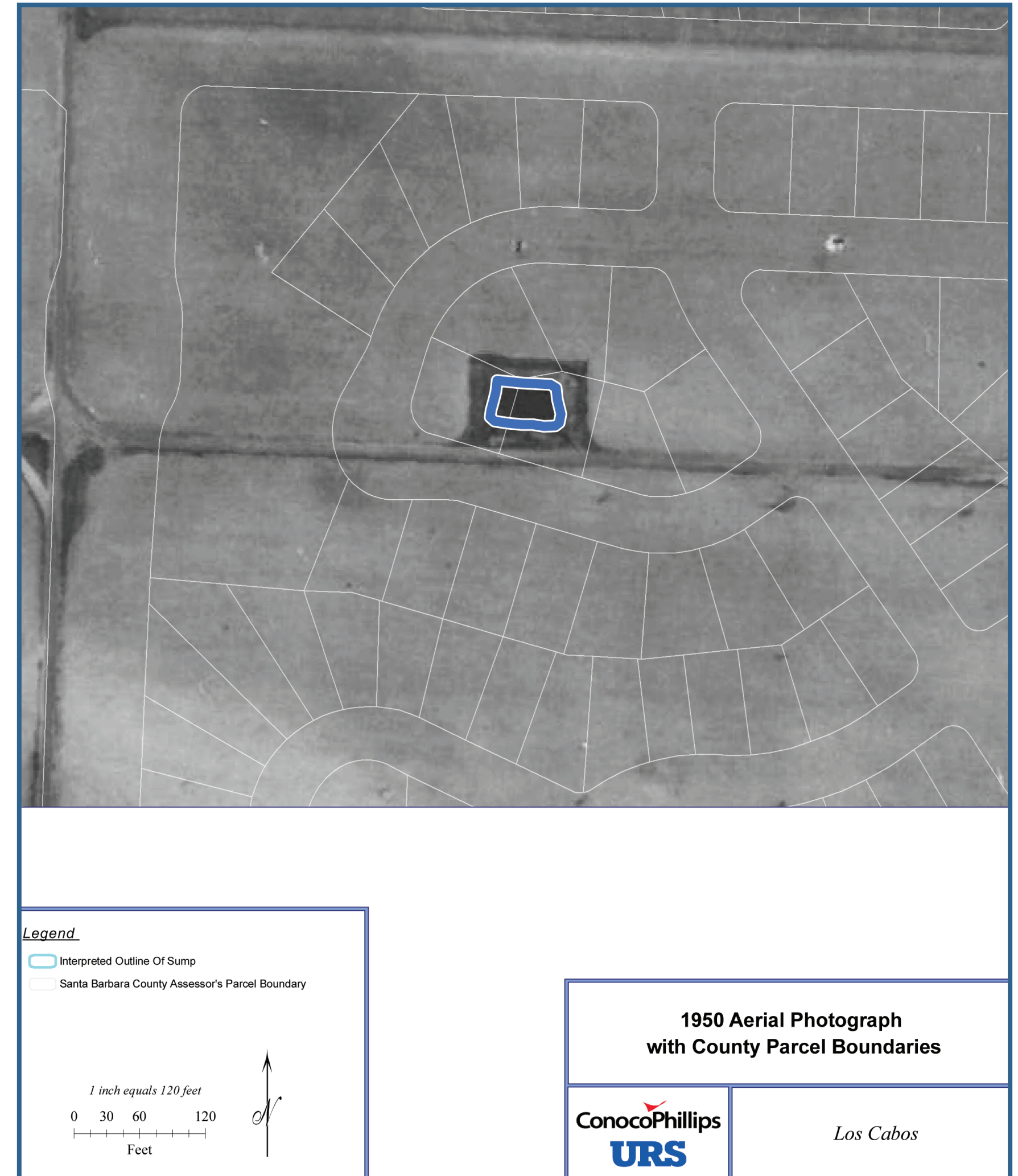
Soil testing professionals take samples of soil from the area under review. The material is analyzed by an independent laboratory and results are reported to ConocoPhillips. If sump material is found, the soil borings are "stepped out" until a clean boundary can be drawn. The results of these investigations are reported to the County for their review and oversight. The affected soil within the boundary becomes the subject of a remedial action plan or RAP, a plan that is developed by ConocoPhillips working with the homeowner, and approved by the County. The RAP identifies how the sump material will be addressed.

INFORMATION AS OF 4/10/07



## 1952

This aerial photo shows a rectangular sump located in the future Los Cabos neighborhood. The dark center portion is the actual sump and the lighter perimeter of the rectangle indicates a berm of soil around it.



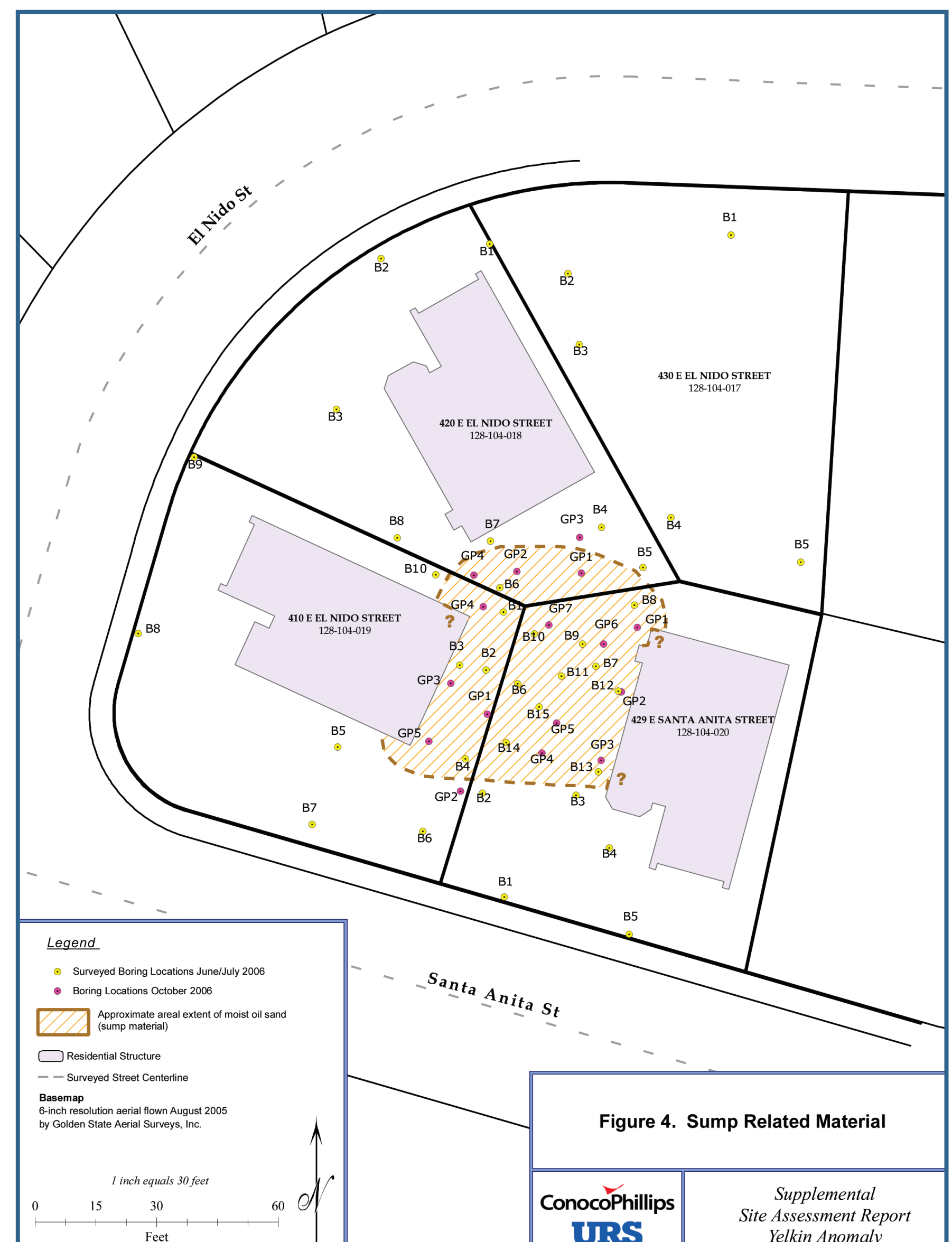
## 1950

This is the same sump, photographed in 1950, overlaid with the county parcel map. The blue box within the rectangle identifies the actual sump.



## 2005

This aerial photo from 2005 illustrates the likely location of the sump relative to the existing neighborhood homes. This information will be confirmed with numerous soil borings.



## 2006

This figure maps the area of soil borings and indicates the homes that may be affected by the presence of sump material. The yellow borings indicate initial testing done in June and July of 2006. After these tests were reviewed, additional testing was conducted in October 2006 to more clearly define the sump. Those borings are indicated in purple.